

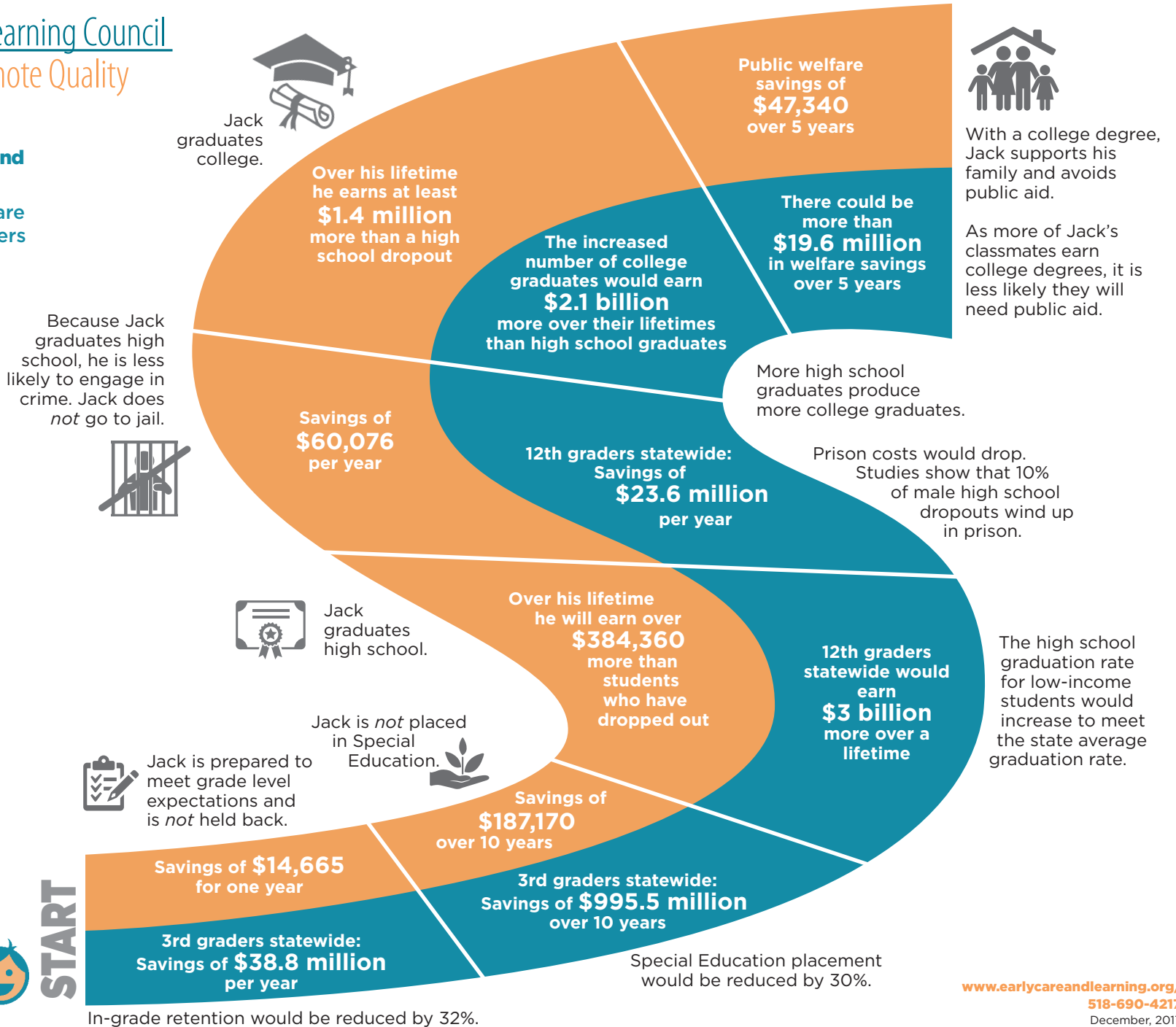
# What if all children in New York had access to high-quality child care?



**34 NY Child Care Resource and Referral (CCR&R) Agencies** help families to find child care and assist child care providers to offer high-quality care.

With high-quality child care, children are much more likely to succeed in school and life.

**Jack, a New York Child All New York Children**



**Sources:**

NY State Education Department, NY 1<sup>st</sup> grade students. (2016-2017 school year). <http://www.p12.nysed.gov/irs/statistics/enroll-n-staff/District2017AllStudents.xlsx>

NY State Education Department, District Enrollment – Economically Disadvantaged (2016-2017 school year). <http://www.p12.nysed.gov/irs/statistics/enroll-n-staff/District2017EconDisadv.xlsx>

NY State Education Department, District Enrollment – Students with Disabilities (2016-2017 school year). <http://www.p12.nysed.gov/irs/statistics/enroll-n-staff/District2017SWD.xlsx>

Annie E. Casey Foundation, Kids Count Data Center, Students in NY retained in Grade Between K-12 at least once. (2011-2012) <http://datacenter.kidscount.org/data/tables/5110-children-ages-6-to-17-who-repeated-one-or-more-grades-since-starting-kindergarten?loc=34&loct=2#detailed/2/34/false/1021,18,14/any/11549,11550>

New York State Association of School Business Officials, *The Education Dollar: Where Does the Money Go?* 2014-2015. (December 2016), average per student costs [https://www.nysasbo.org/uploads/reports/1481059249\\_Spending%20Report%202016%20FINAL.pdf](https://www.nysasbo.org/uploads/reports/1481059249_Spending%20Report%202016%20FINAL.pdf)

NY State Education Department, 2016 Graduation rate data (Released Feb. 2017) <http://www.nysed.gov/news/2017/state-education-department-releases-2012-cohort-high-school-graduation-rates>

NY State Education Department, June Graduation Rates for 2012 Cohort <http://www.nysed.gov/common/nysed/files/grad-rate-data-slides-2012-cohort.pdf>

U.S. Census Bureau, Table S2001 Earnings in the Past 12 Months, 2016 American Community Survey 1 Year Estimates. [https://factfinder.census.gov/faces/tableservices/jsf/pages/productview.xhtml?pid=ACS\\_16\\_1YR\\_S2001&prodType=table](https://factfinder.census.gov/faces/tableservices/jsf/pages/productview.xhtml?pid=ACS_16_1YR_S2001&prodType=table)

U.S. Department of Justice, National Center for Juvenile Justice, Office of Juvenile Justice and Delinquency Prevention, Juvenile Offenders and Victims, National Report. (2014). <http://www.ojjdp.gov/ojstatbb/nr2014/downloads/NR2014.pdf>

Vera Institute. *The Price of Prisons, What Incarceration Costs Taxpayers*, 2012. <https://shnny.org/uploads/Price-of-Prisons.pdf>

Cahalan, M., Perna, L. W., Yamashita, M., Ruiz, R., & Franklin, K. (2017). *Indicators of Higher Education Equity in the United States: 2017 Trend Report*, Washington, DC: Pell Institute for the Study of Higher Education, Council for Education Opportunity (COE) and Alliance for Higher Education and Democracy (AHEAD) of the University of Pennsylvania. [http://pellinstitute.org/downloads/publications-Indicators\\_of\\_Higher\\_Education\\_Equity\\_in\\_the\\_US\\_2017\\_Historical\\_Trend\\_Report.pdf](http://pellinstitute.org/downloads/publications-Indicators_of_Higher_Education_Equity_in_the_US_2017_Historical_Trend_Report.pdf)

Percent of NY Pell Grant recipients who graduate SUNY (within 6 years) (56.6%) <http://system.suny.edu/media/suny/content-assets/documents/institutional-research/Student-Success-DataBrief-Jan2015.pdf>

Congressional Research Service (CRS), *The Temporary Assistance for Needy Families (TANF) Block Grant: Responses to Frequently Asked Questions*. March 2016.

NY Monthly TANF Benefits for a family of 3 (\$789) and percent of children living in poverty receiving TANF (20%), <https://fas.org/sgp/crs/misc/RL32760.pdf>

James Heckman lifetime welfare savings estimates (\$1,844 lifetime from treated group), NBER Working Paper Series, The Rate of Return to the High/Scope Perry Preschool Program, James Heckman.. November 2009. <http://www.nber.org/papers/w15471.pdf>

**NY Child Care Resource & Referral (CCR&R) Agencies**

- Adirondack Community Action Programs, Inc.
- Allegany County Community Opportunities and Rural Development, Inc.
- Capital District Child Care Council
- Chautauqua Child Care Council
- Chemung County Child Care Council, Inc.
- Child & Family Resources, Inc.
- Child Care Aware® of Steuben and Schuyler
- Child Care Coordinating Council of the North Country, Inc.
- Child Care Council of Dutchess & Putnam, Inc.
- Child Care Council of Nassau, Inc.
- Child Care Council of Oneida County Cornell Cooperative Extension
- Child Care Council of Orange County, Inc.
- Child Care Council of Suffolk, Inc.
- Child Care Council of Westchester, Inc.
- Child Care Council, Inc.
- Child Care Resource Network
- Child Care Resources of Rockland, Inc.
- Child Care Solutions, Inc.
- Child Development Council of Central New York, Inc.
- Child Development Support Corporation
- Chinese-American Planning Council, Inc.
- Community Action of Orleans & Genesee, Inc.
- Community Action Planning Council of Jefferson County, Inc.
- Day Care Council of New York, Inc.
- Delaware Opportunities, Inc.
- Family Enrichment Network, Inc.
- Family of Woodstock, Inc.
- Integrated Community Planning Council of Oswego County, Inc.
- Niagara Community Action Program, Inc.
- Schoharie County Community Action Program, Inc.
- Southern Adirondack Child Care Network, Inc.
- St. Lawrence Child Care Council, Inc.
- Sullivan County Child Care Council, Inc.
- The Committee for Hispanic Children & Families,